

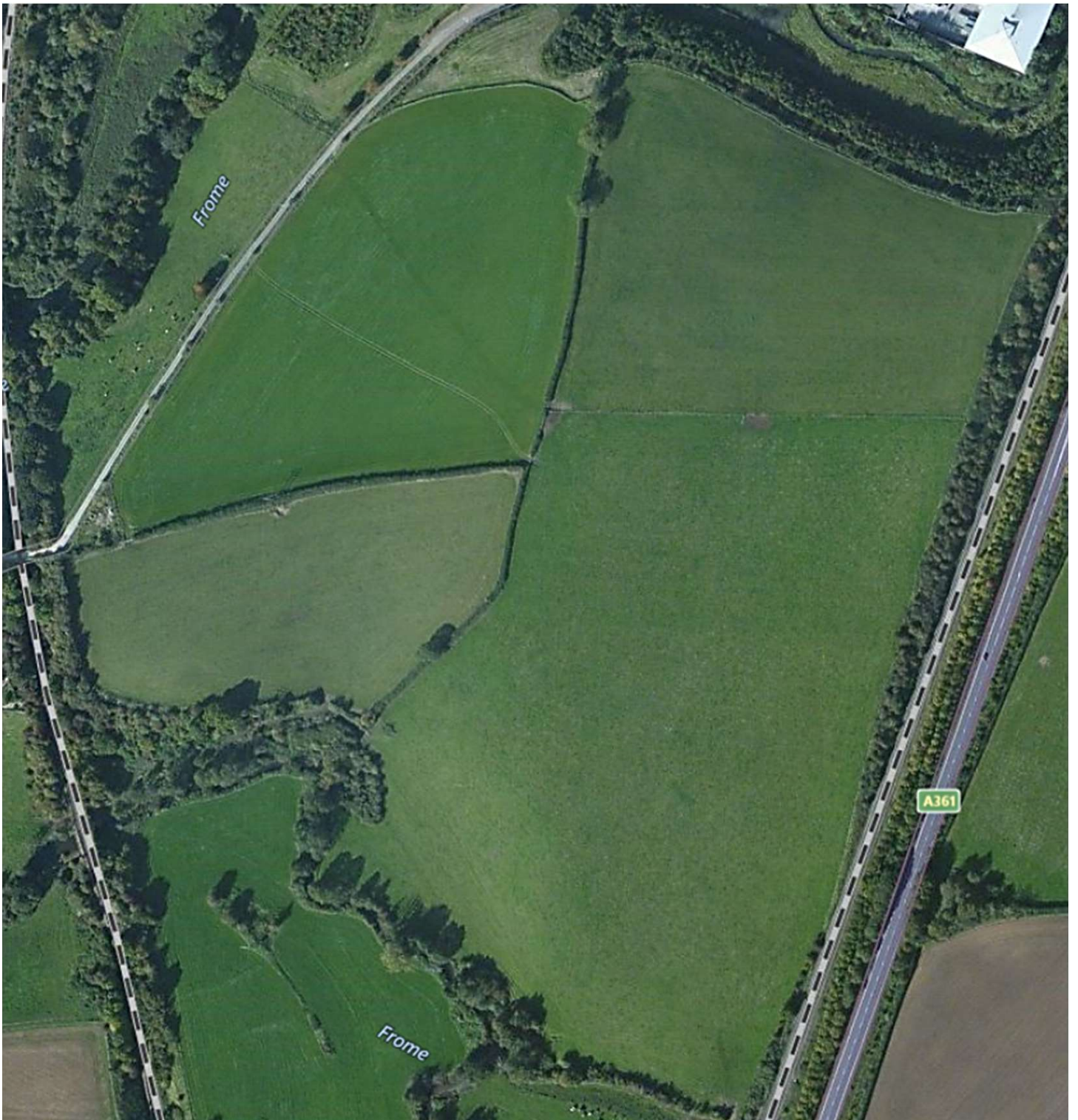
## The finished Edmund Park estate amalgamated from several planning applications





Edmund Park from a microlight camera 2018





## ► Land at Wallbridge, Frome

**Client:** Private Landowners

**Services Provided:**

Agency & Commercial Development • Residential Development



Alder King has acted for a group of private landowners over a period of 25 years to maximise the development potential and, ultimately, the value of their land.

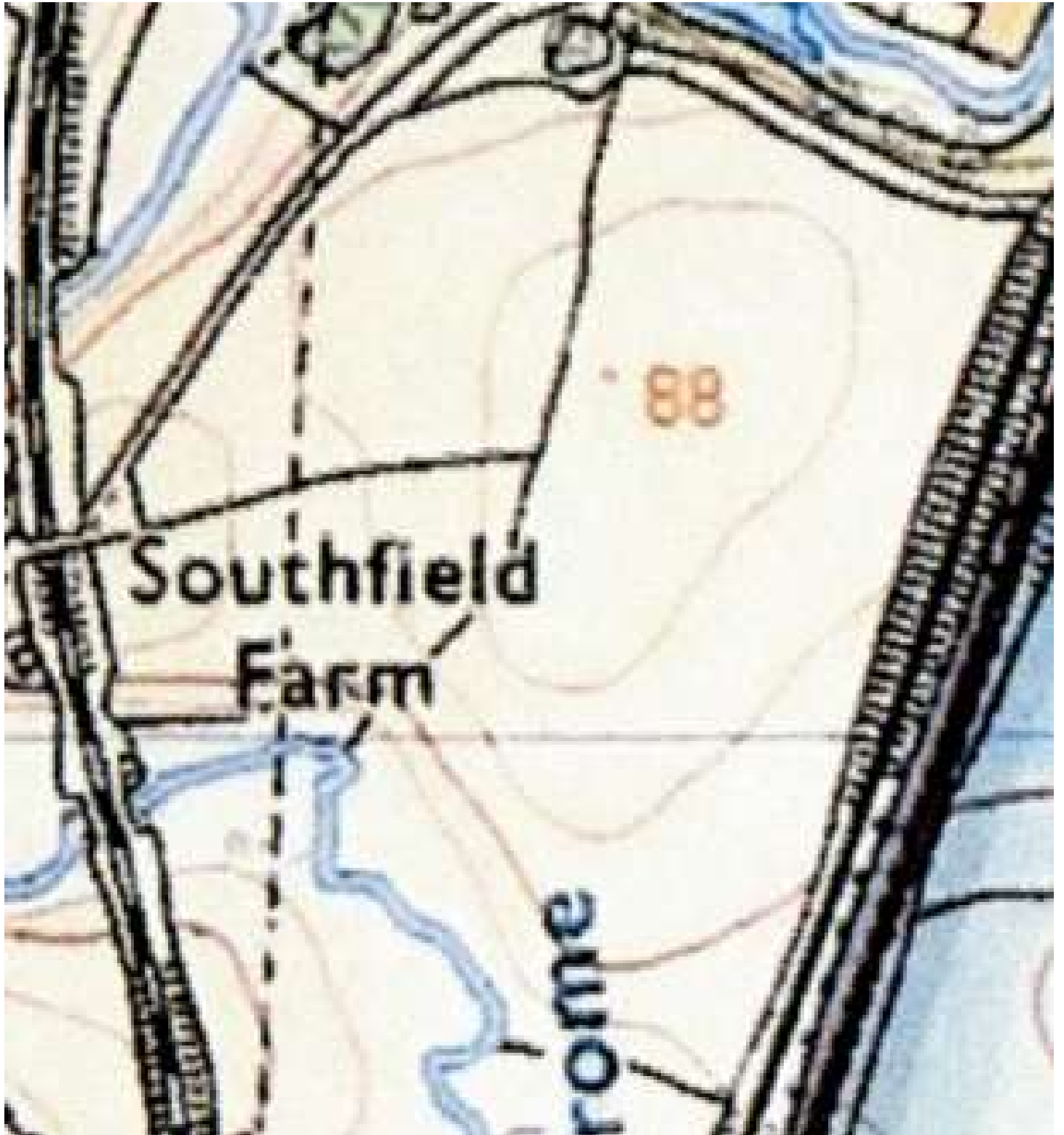
Initially the land was identified and promoted as being suitable for a major food superstore development. On behalf of the landowners, we secured a developer partner to prosecute a difficult but ultimately successful planning application on part of the site, thereby mitigating cost and risk for the landowners. After a market competitive exercise to maximise value of the consented scheme, it was sold to Asda in a multi-million pound transaction.

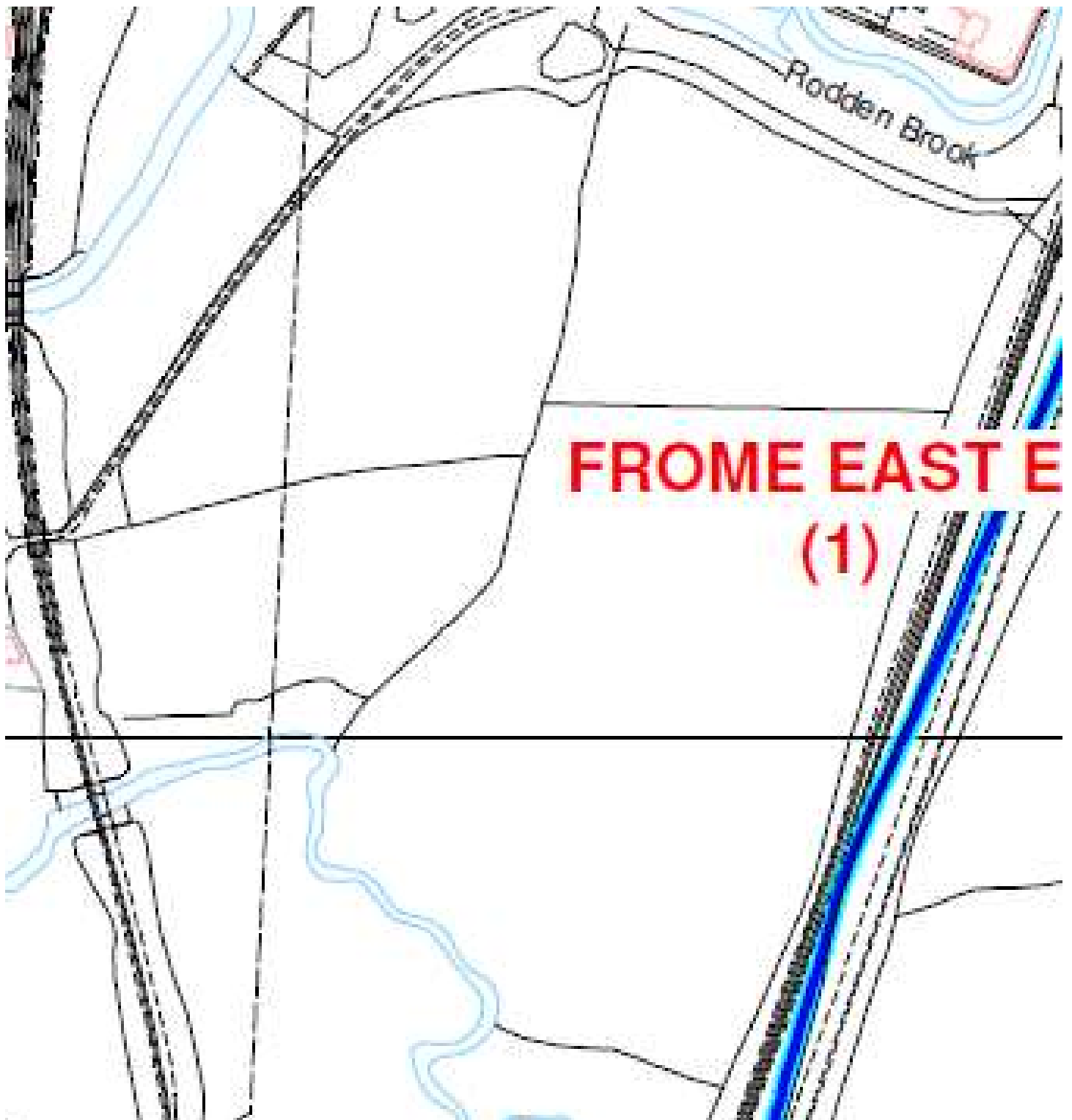
Coupled with a different developer partner, especially selected following a competitive process, we promoted the residual 50 acres of the site for residential development and secured outline planning permission for up to 550 homes and resolved technical infrastructure issues. With the benefit of the planning permission, the site was aggressively promoted to the plc volume housebuilders and ultimately sold to Persimmon Homes for in excess of £20 million in 2015.

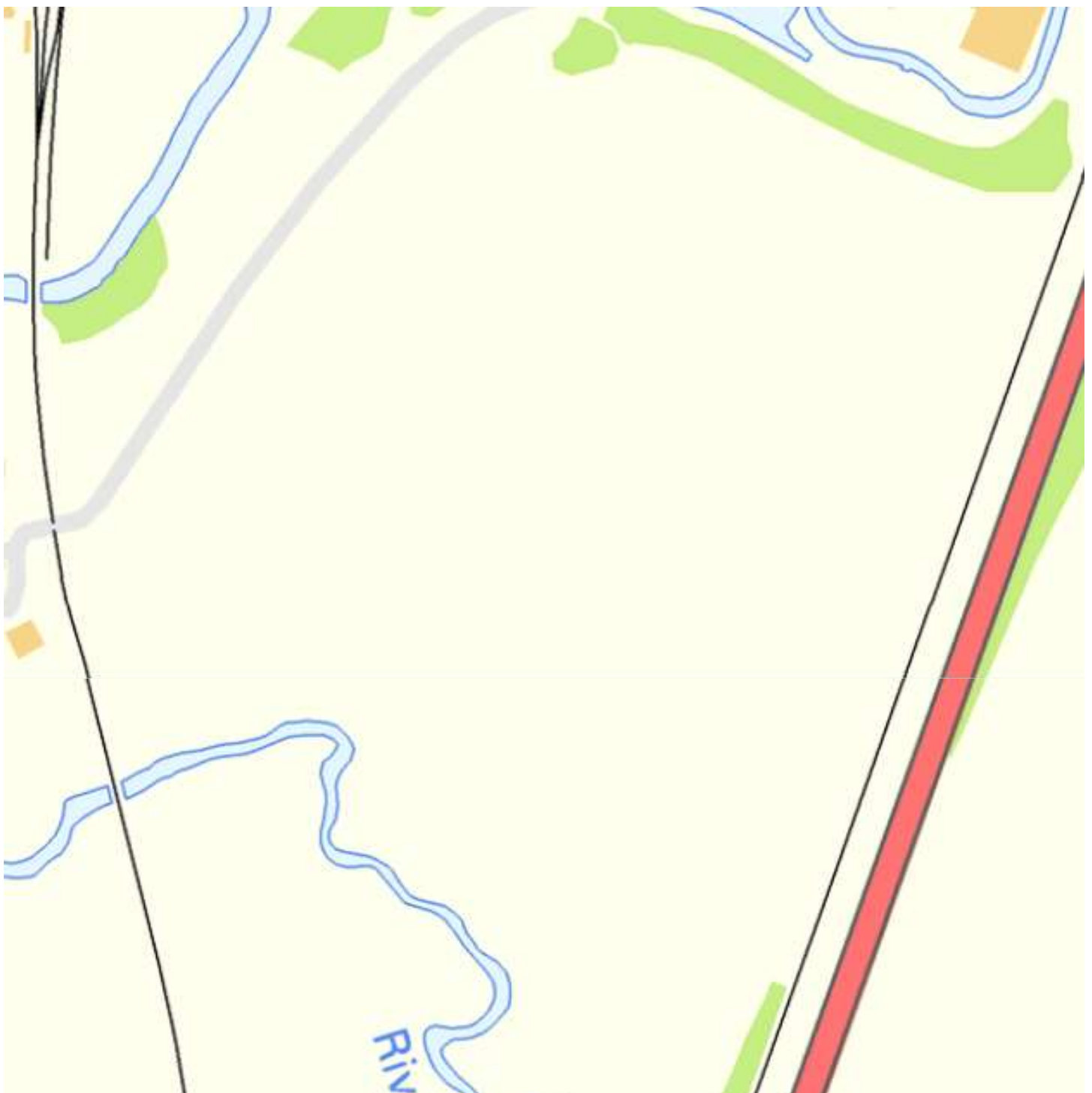
This long-term commitment to our clients protected them from any speculative expenditure and through the careful negotiation of development and planning agreements enabled us to maximise development value.



Frome Town Hall Foyer Map



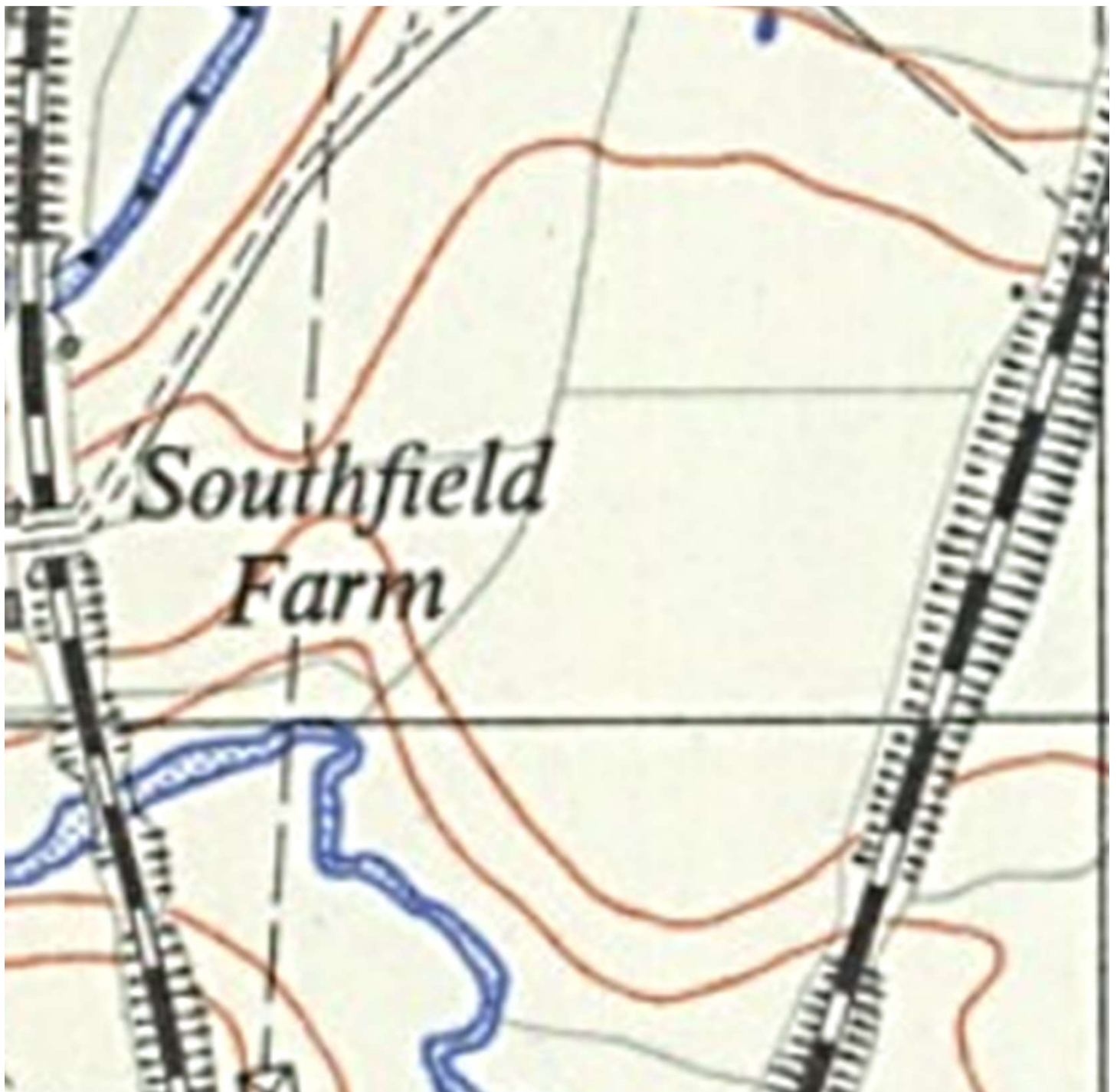






<https://maps.nls.uk/view/95749721> OS 1:25,000 map Published 1957

Compiled from 6" sheets last fully revised 1902-39.  
Other partial systematic revision 1938-55 has been  
incorporated.

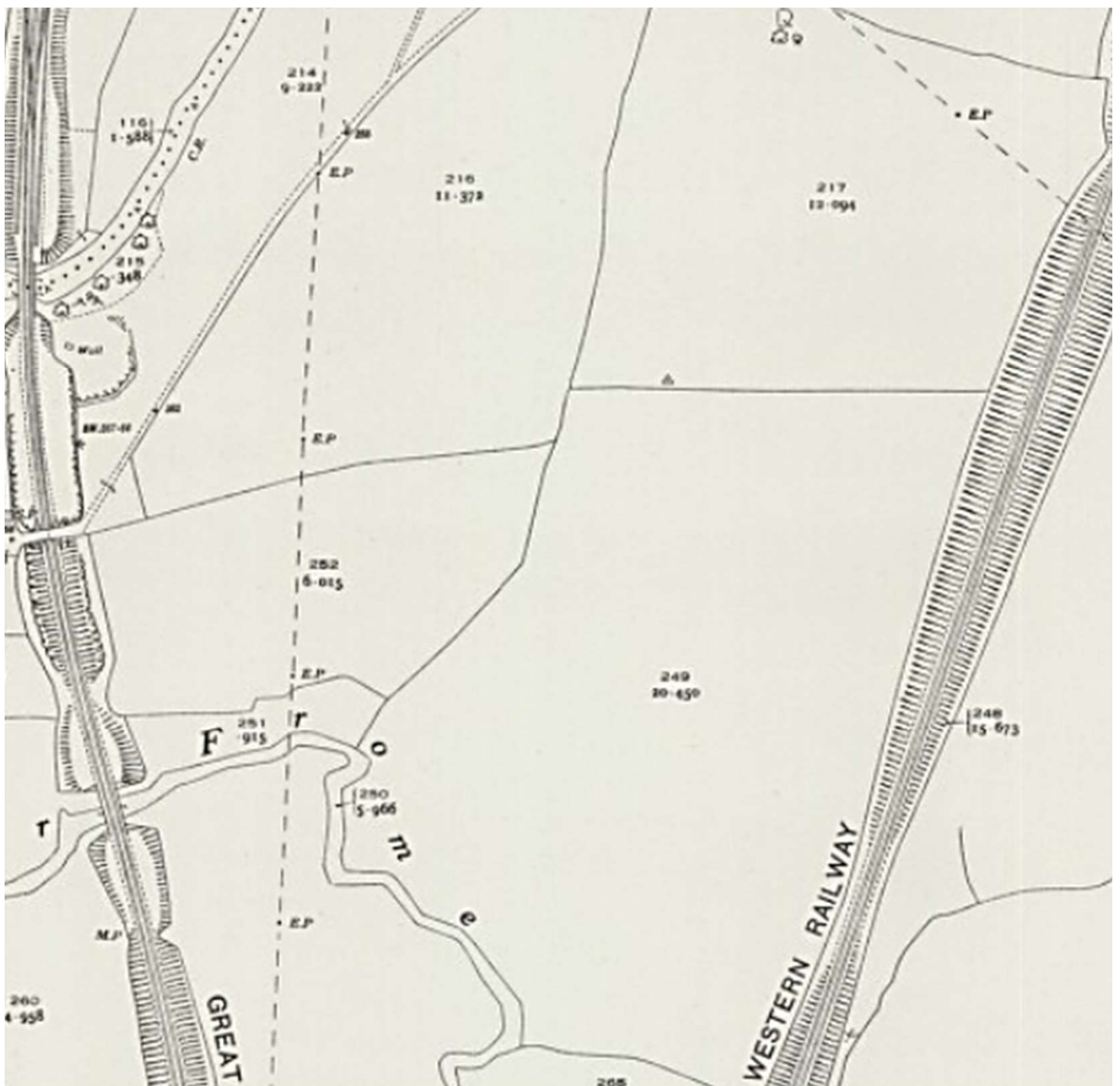




Revision of { Somerset 1929 & part Revision 1936, with additions in 1938 & 1939.  
Wiltshire 1922 ..... with additions in ..... 1938.



*Surveyed 1884. Revised 1936. Re-levelled 1937.*

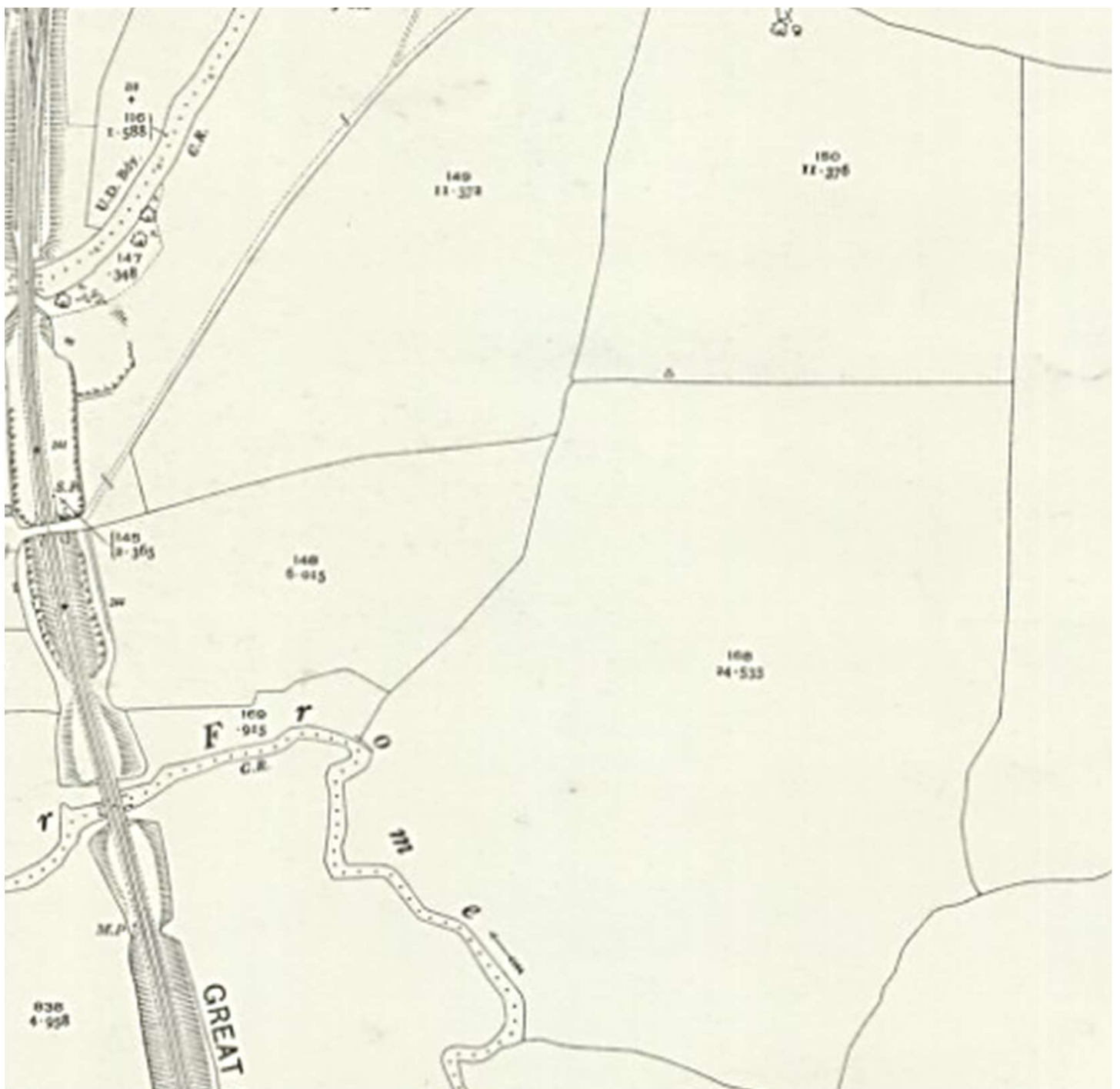




*Somerset. Surveyed in 1884. Revised in 1929. Levelling Revised in 1903.*



*Surveyed in 1884. Revised in 1929.  
Levelling Revised 1903.*







*Somerset. Surveyed in 1884. Revised in 1902.*



*Surveyed in 1884. Revised in 1902.*

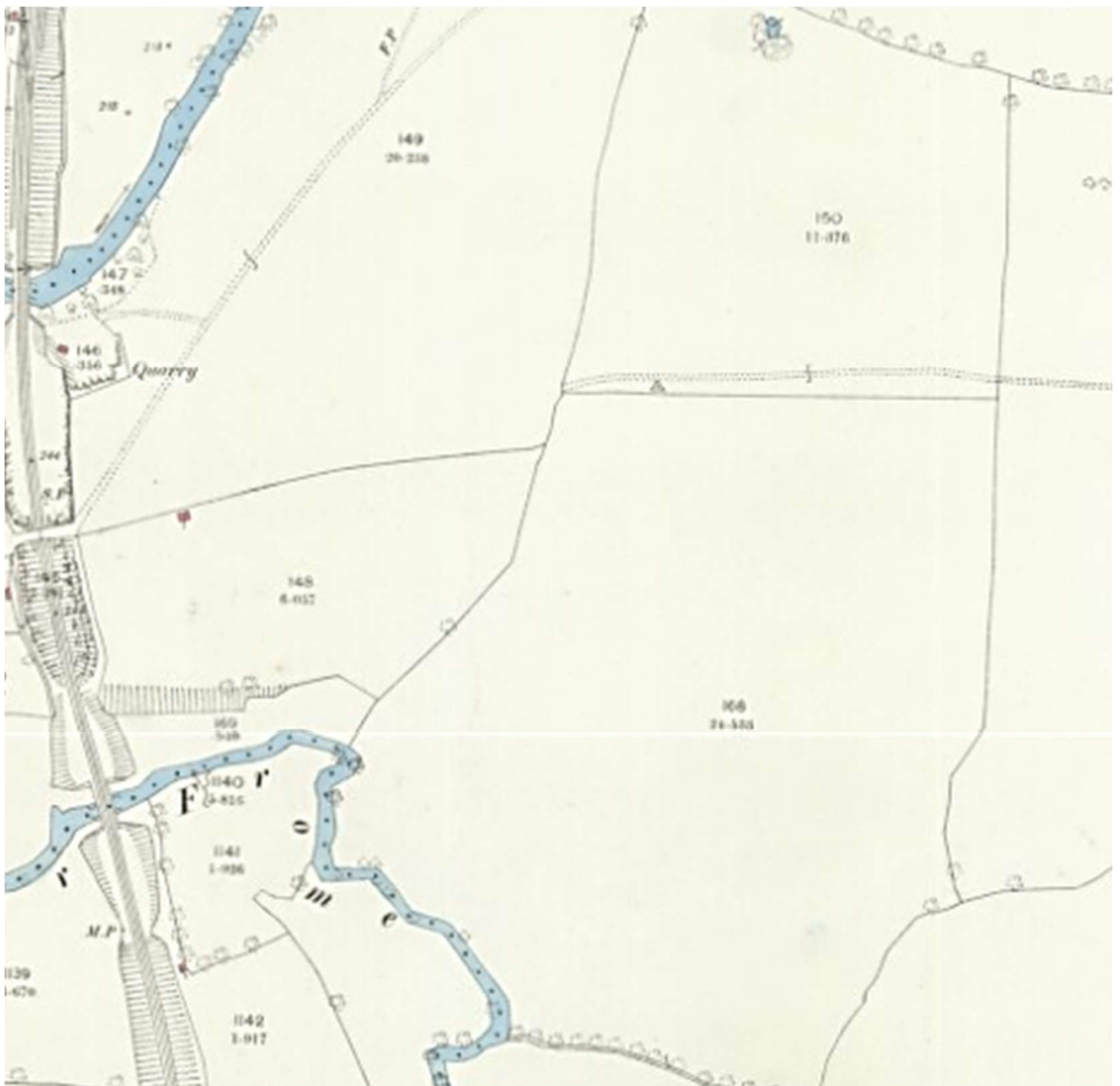




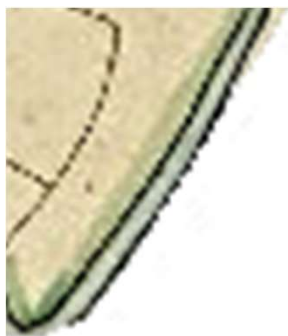
*Surveyed in 1885.*



*Surveyed in 1884*



*Excludes Rodden Parish*



From the map "Manors of Rodden, Flintford and Grinton 1776"

